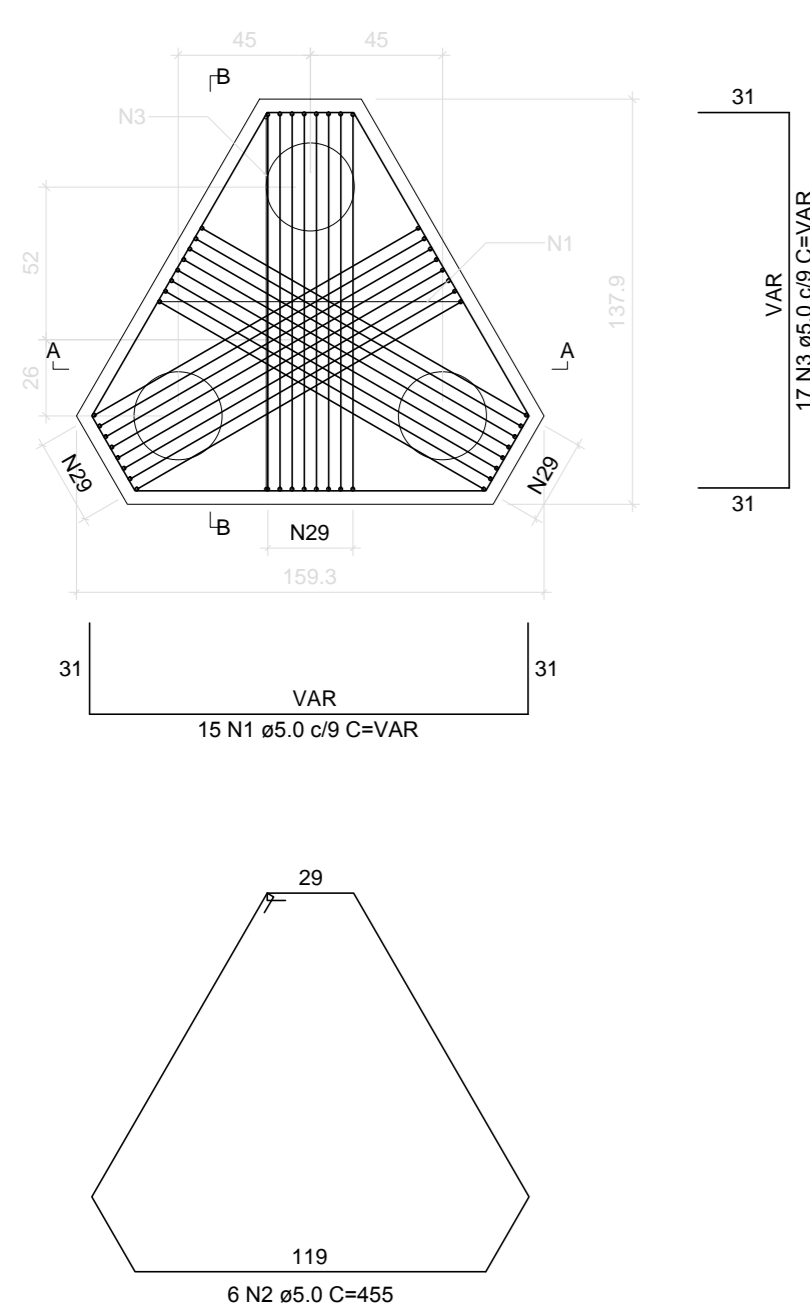
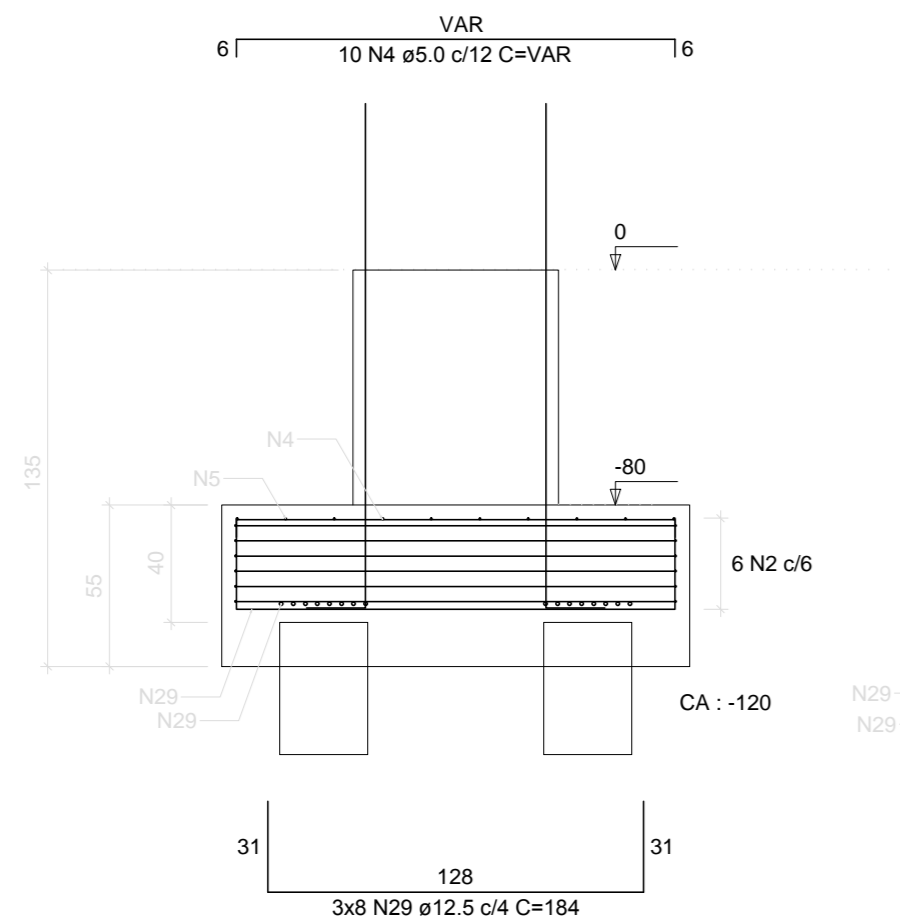


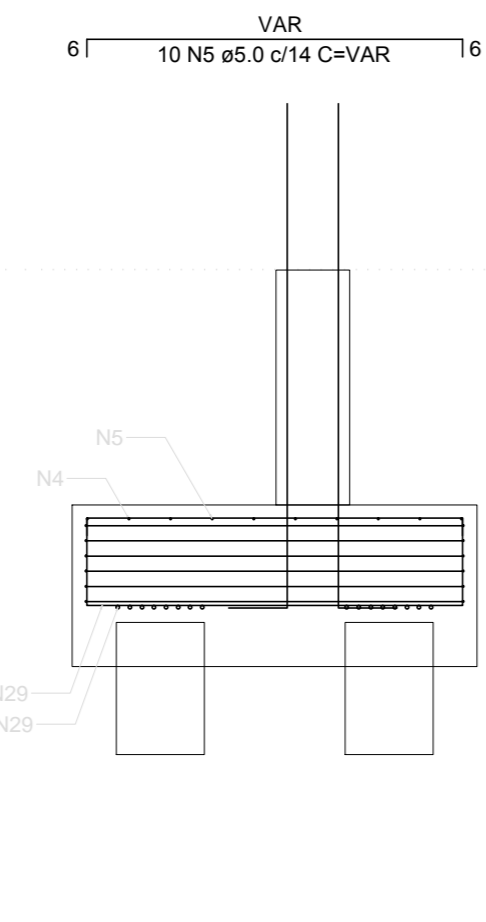
B1=B10
3xHCM30
PLANTA
ESC 1:25



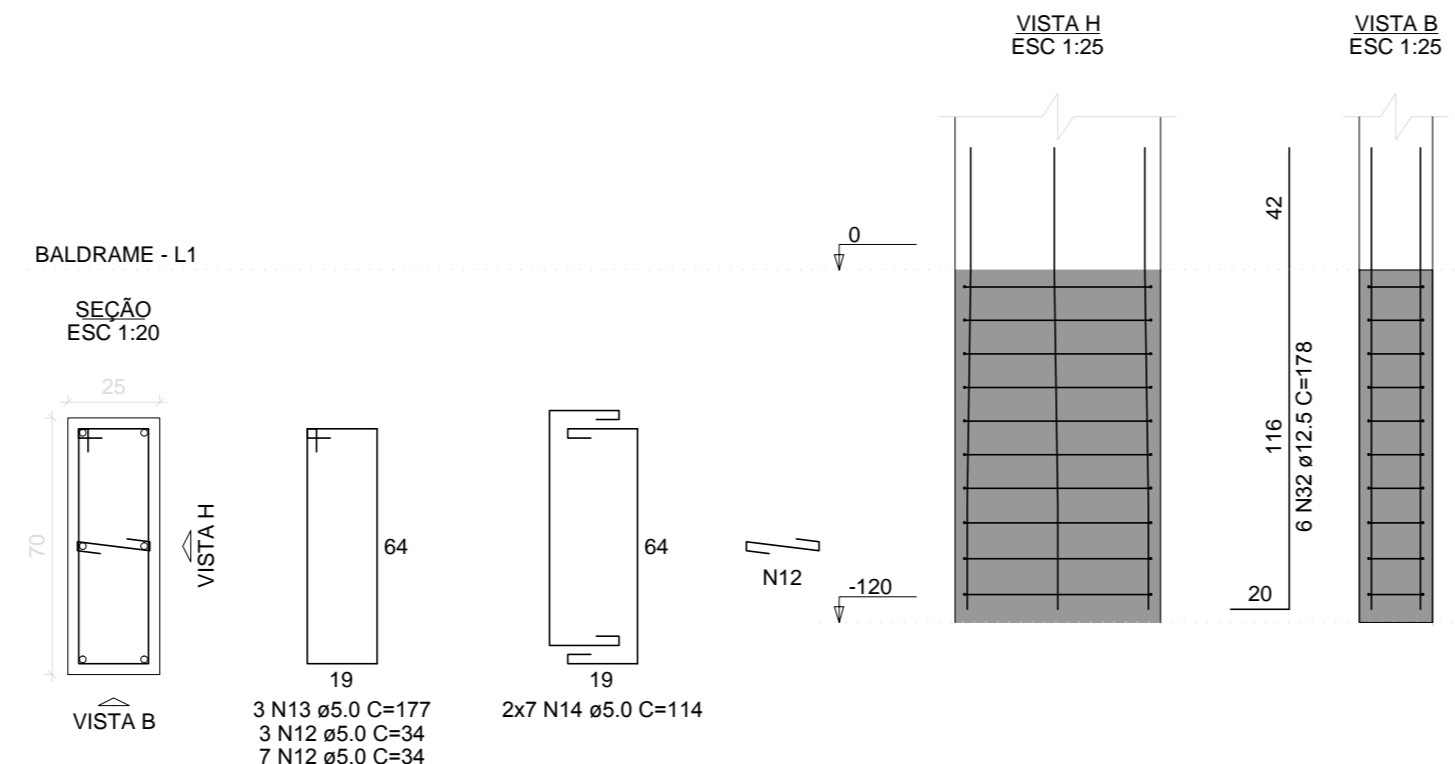
CORTE A-A
ESC 1:25



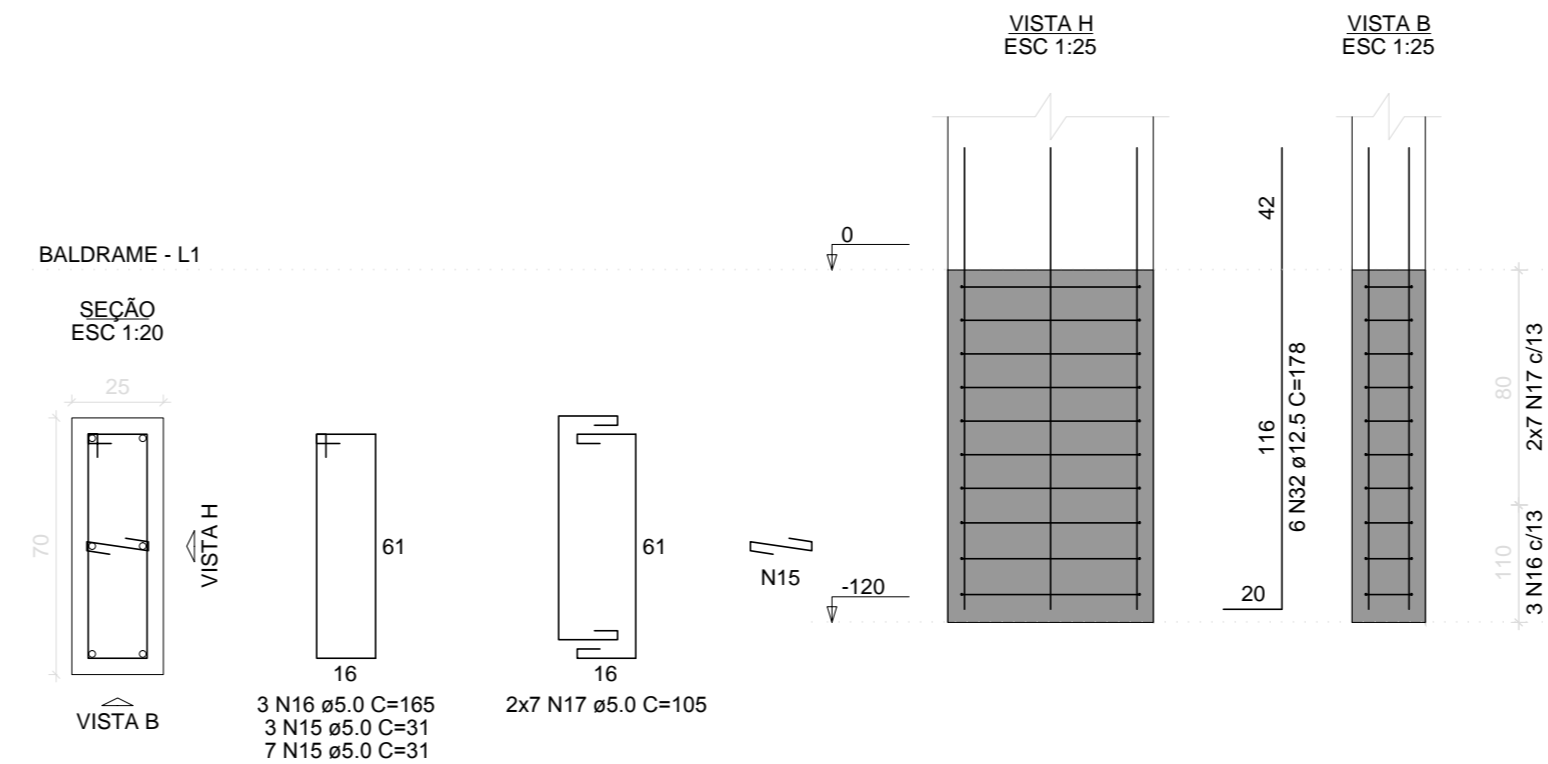
CORTE B-B
ESC 1:25



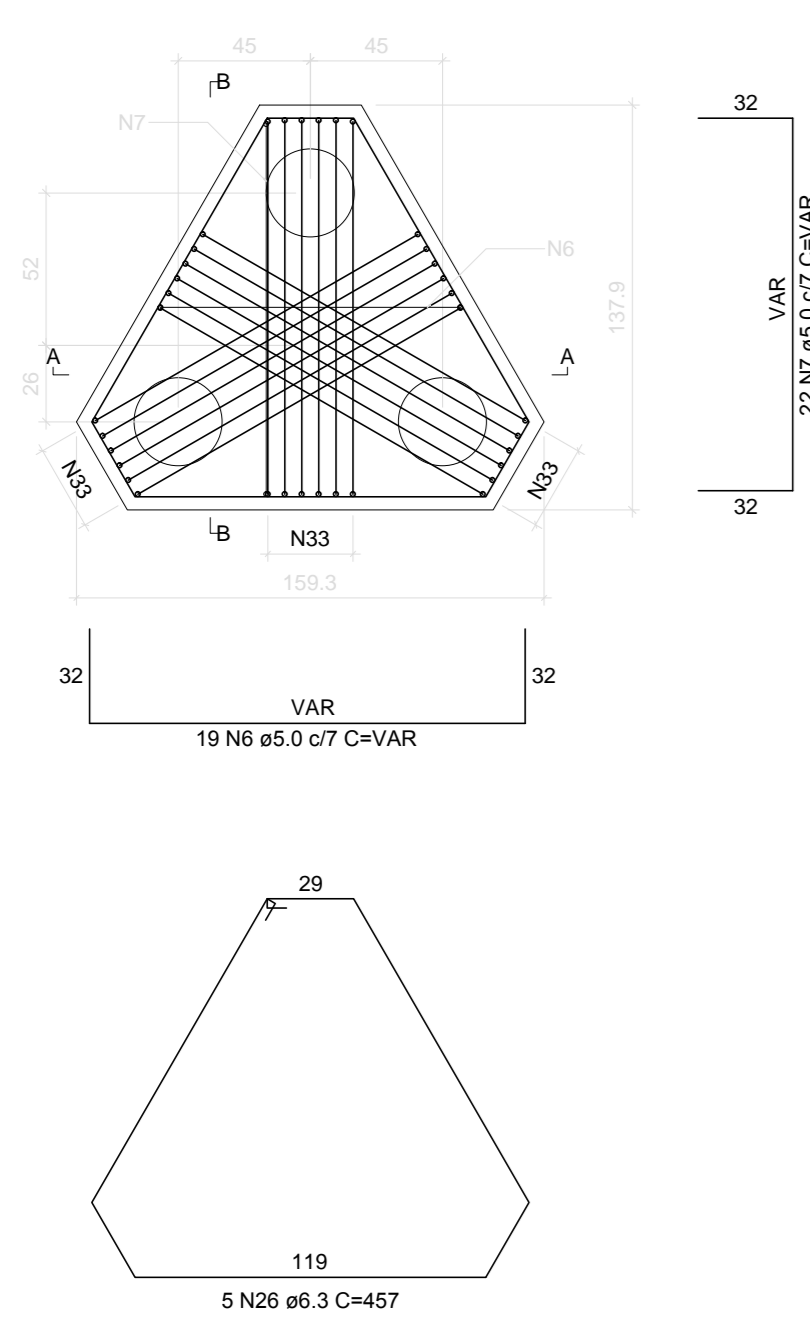
P1



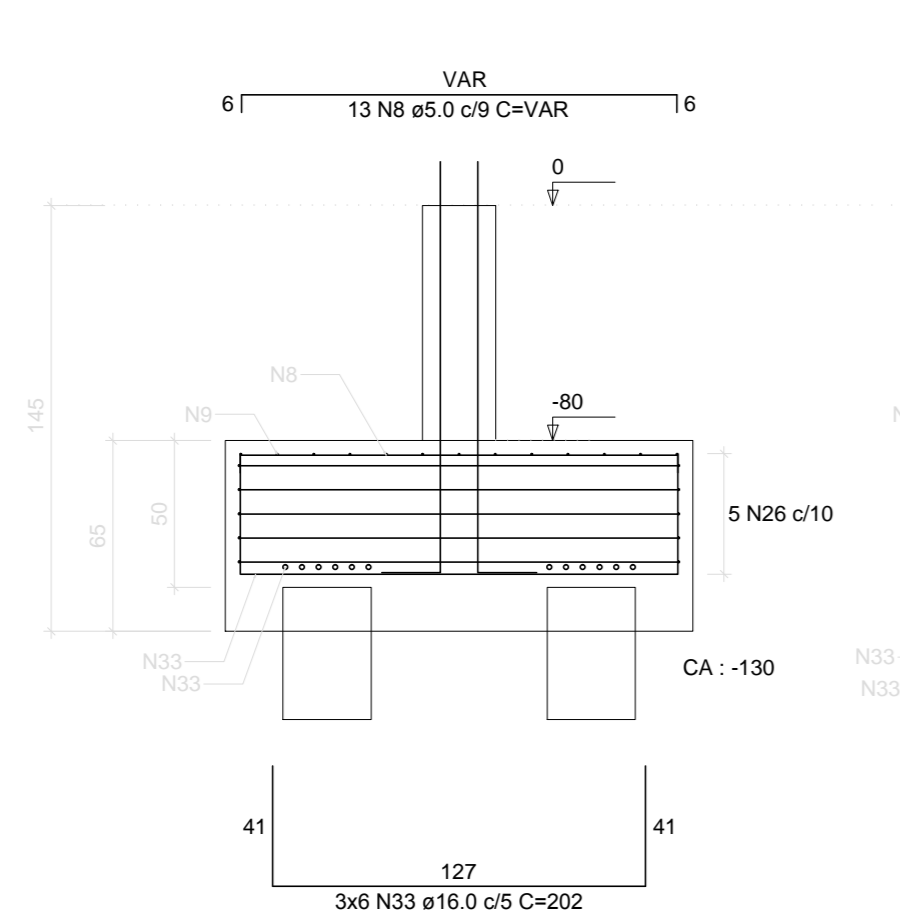
P10



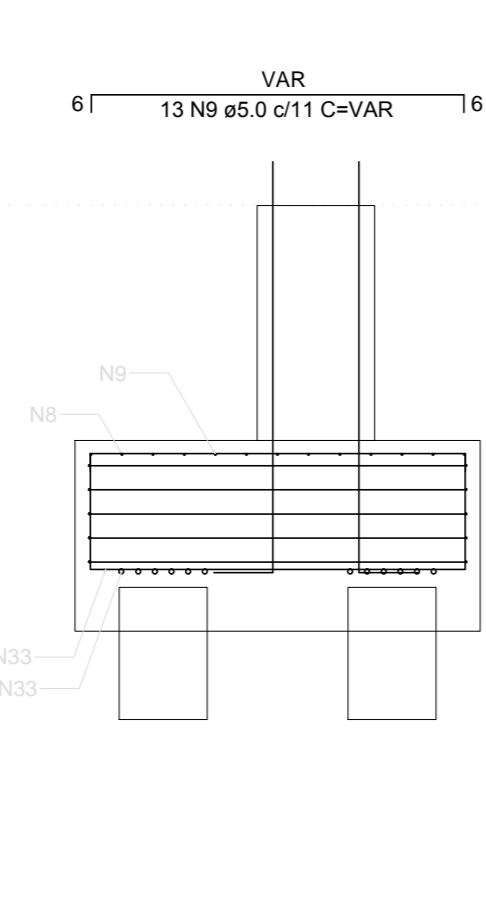
B11=B39
3xHCM30
PLANTA
ESC 1:25



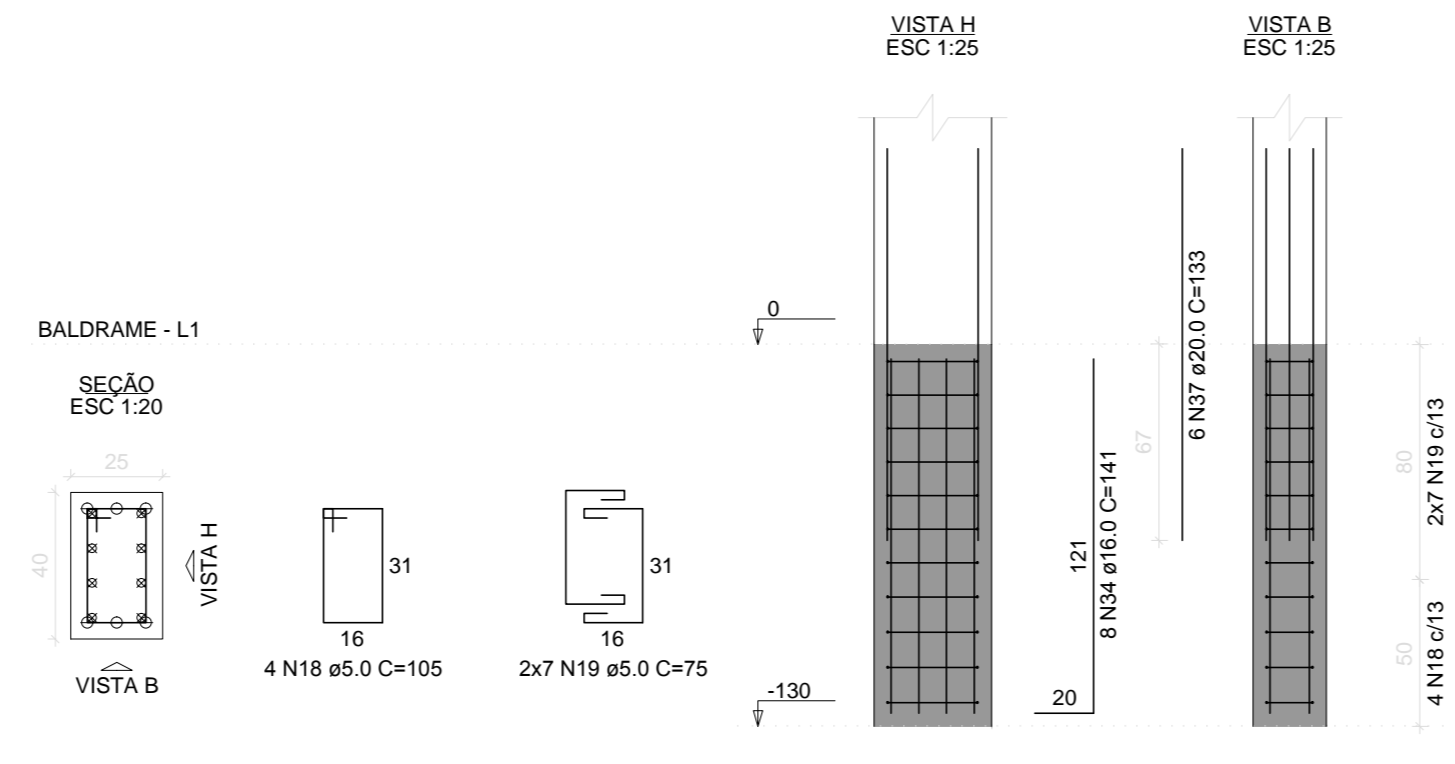
CORTE A-A
ESC 1:25



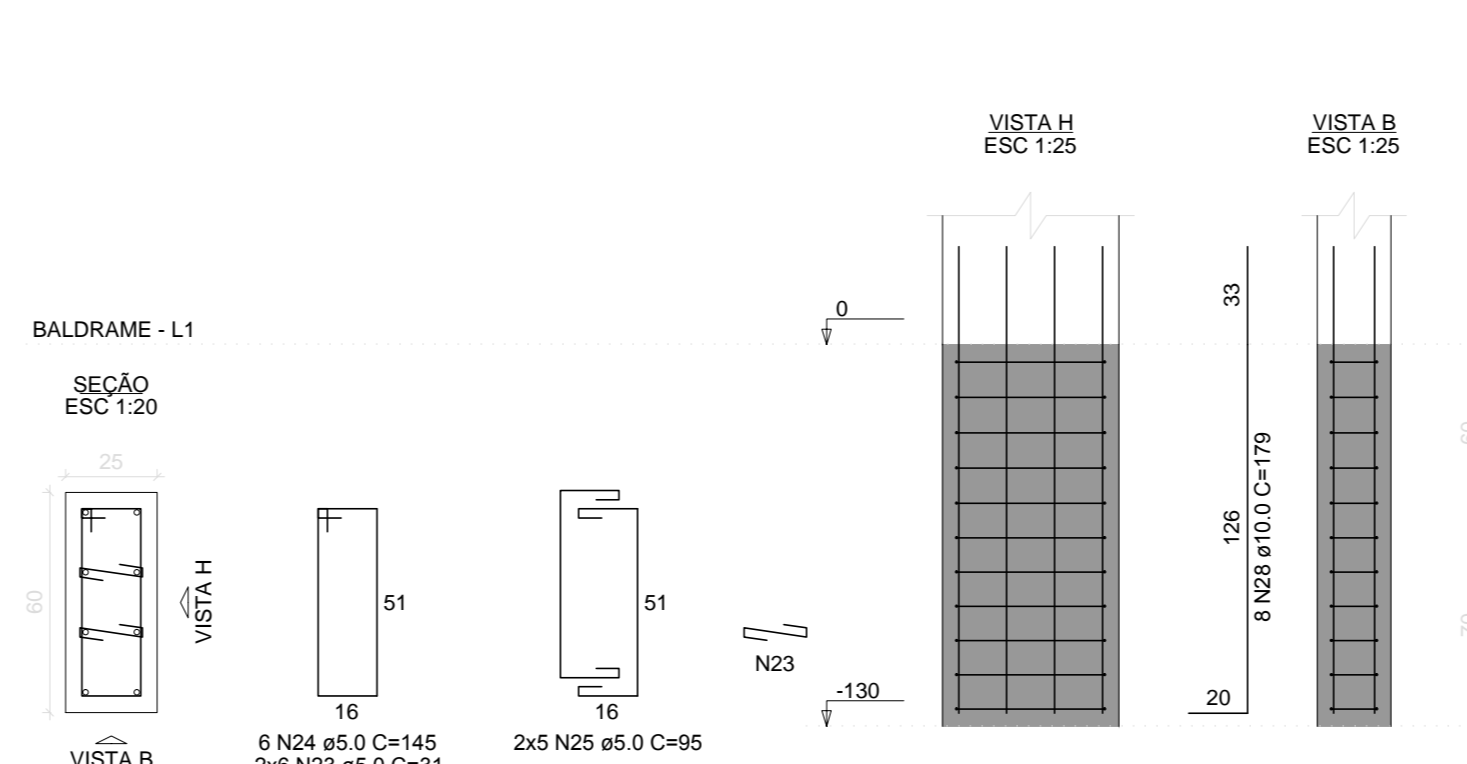
CORTE B-B
ESC 1:25



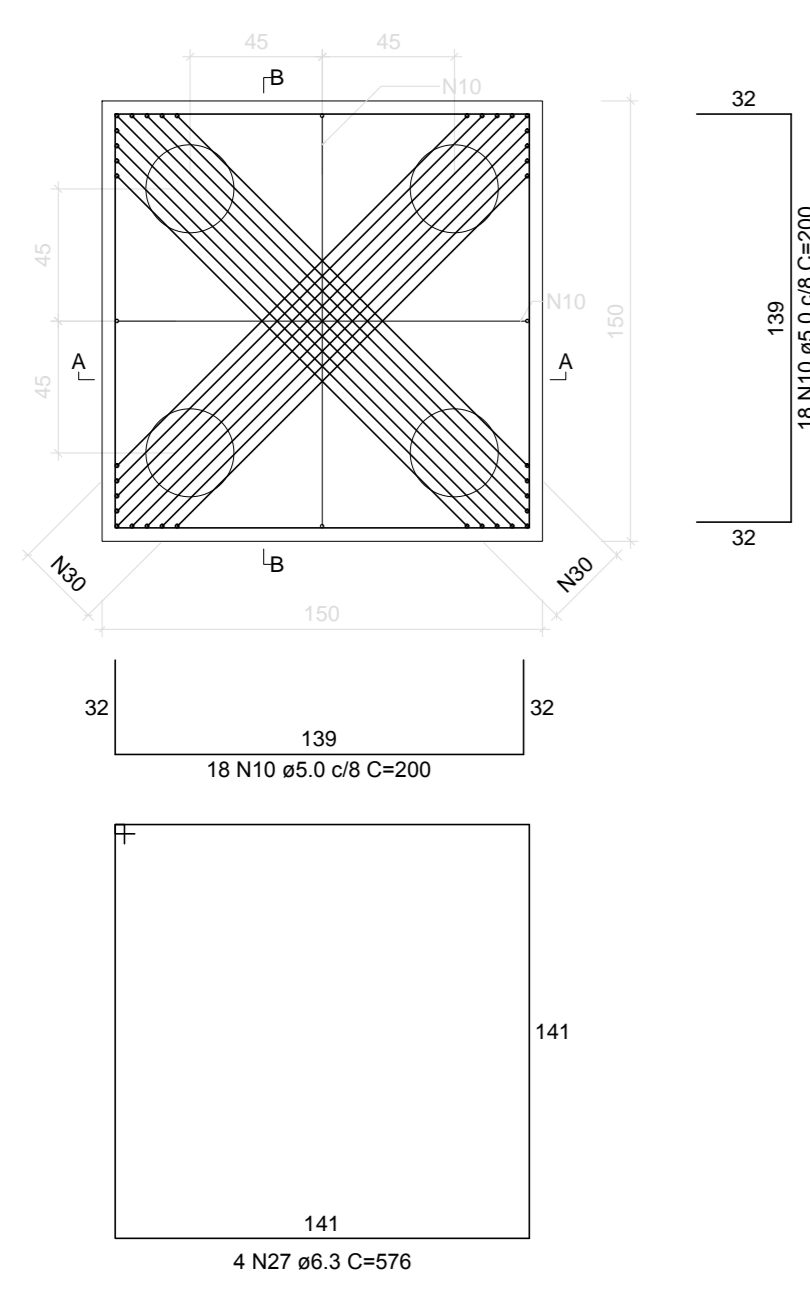
P11



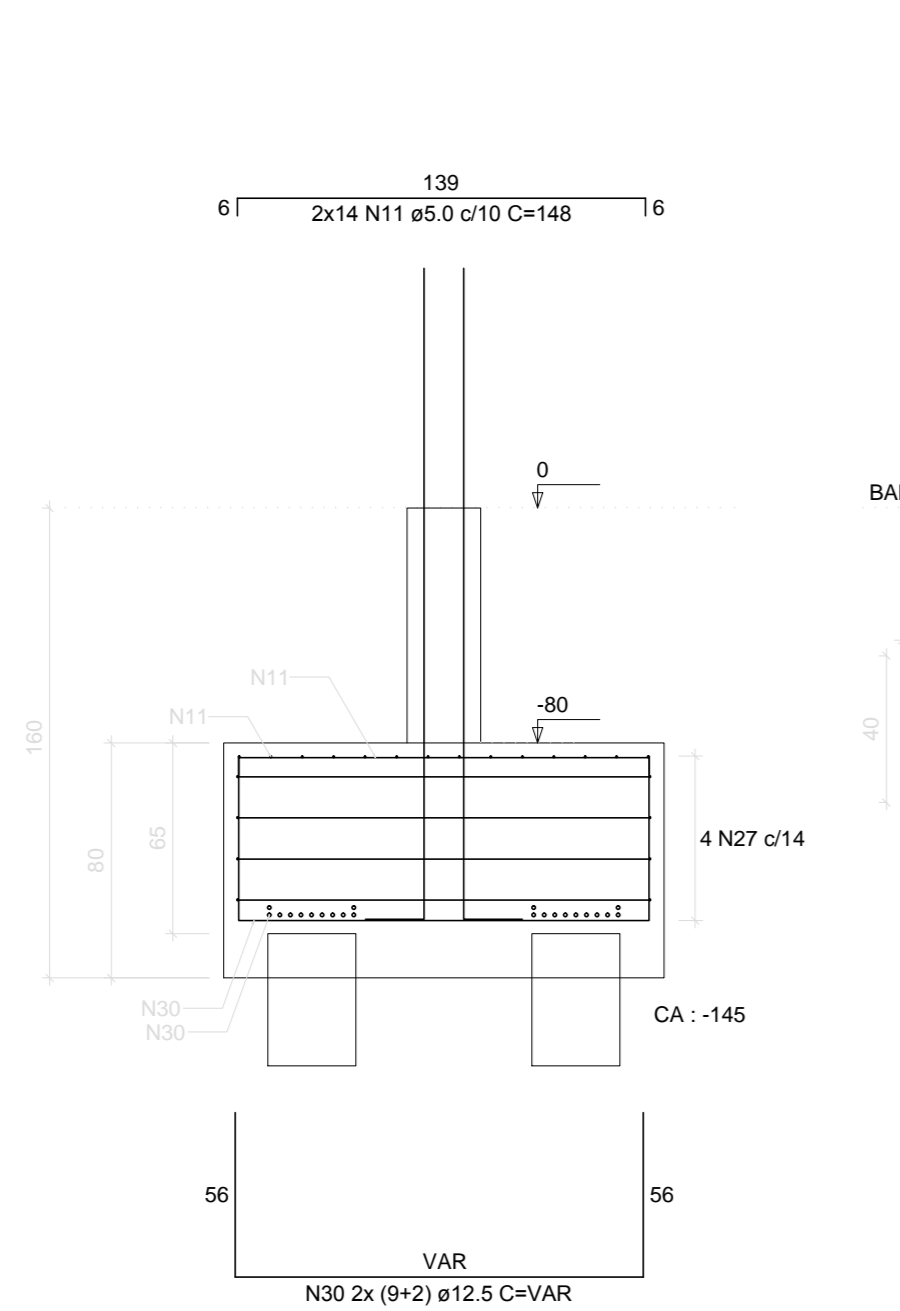
P39



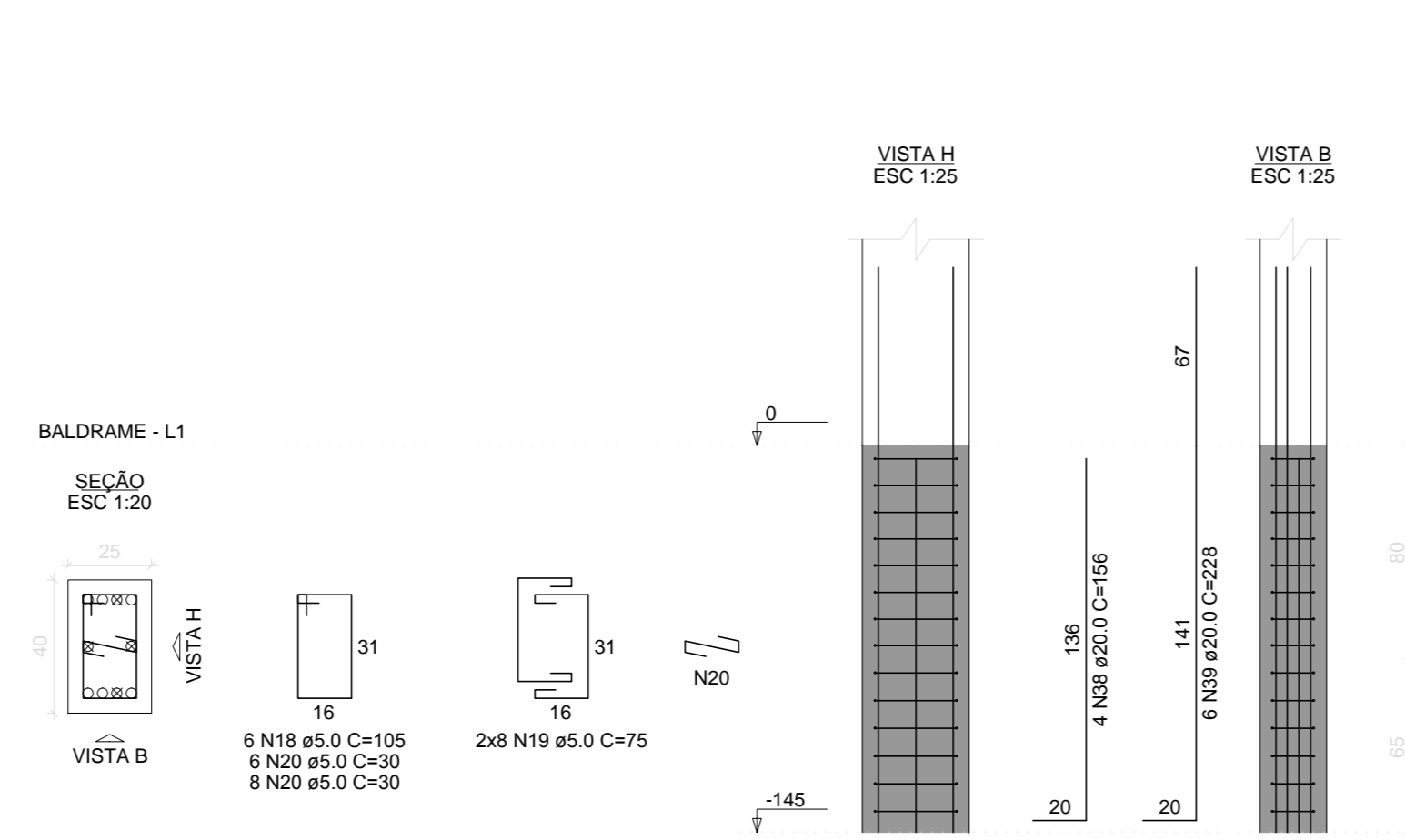
B12
4xHCM30
PLANTA
ESC 1:25



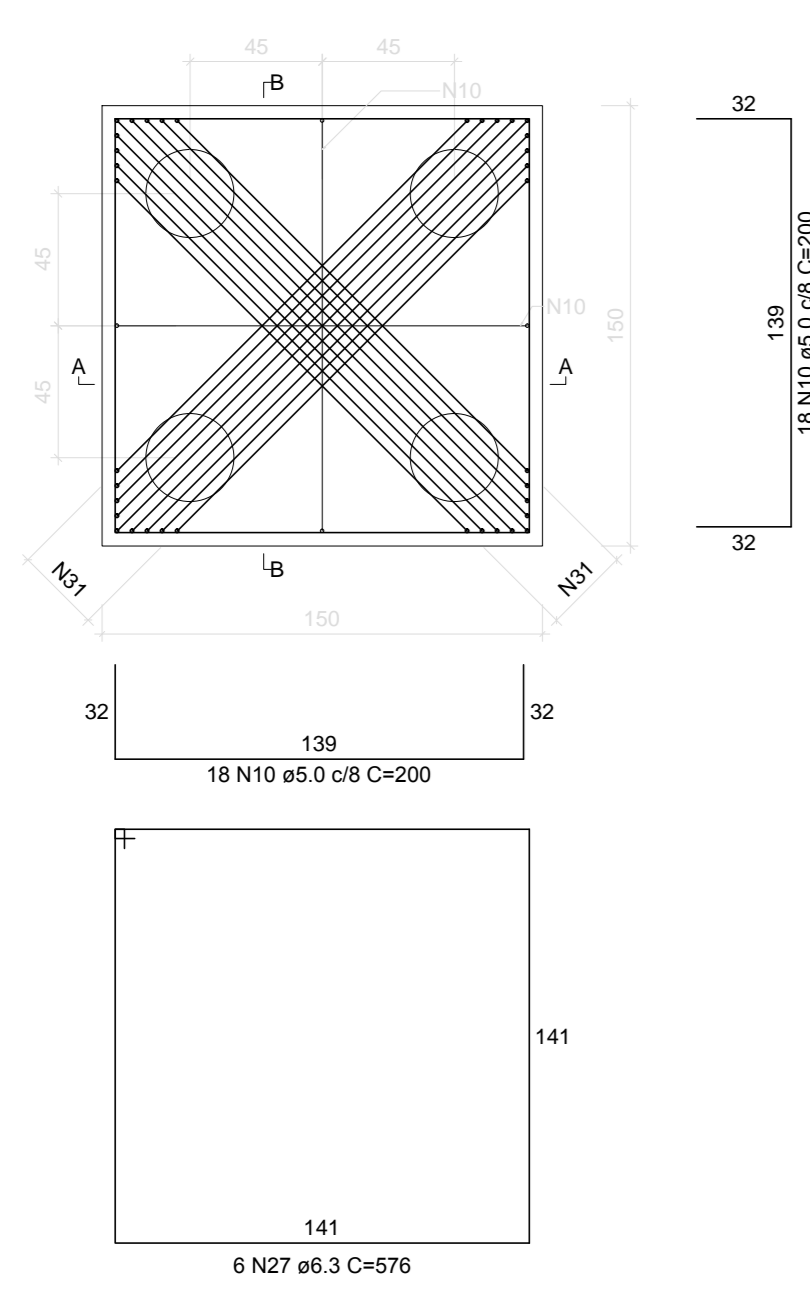
CORTE A-A = CORTE B-B
ESC 1:25



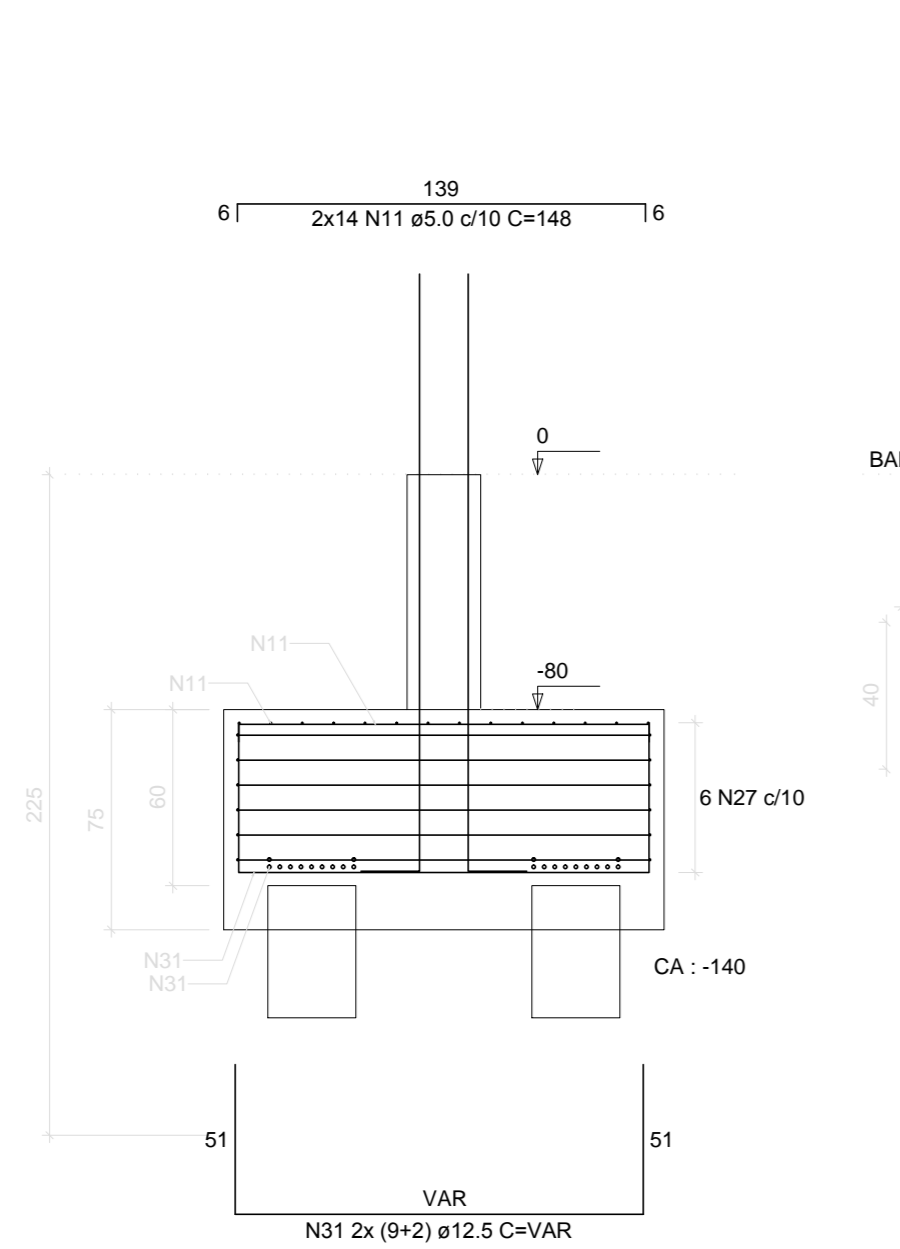
P12



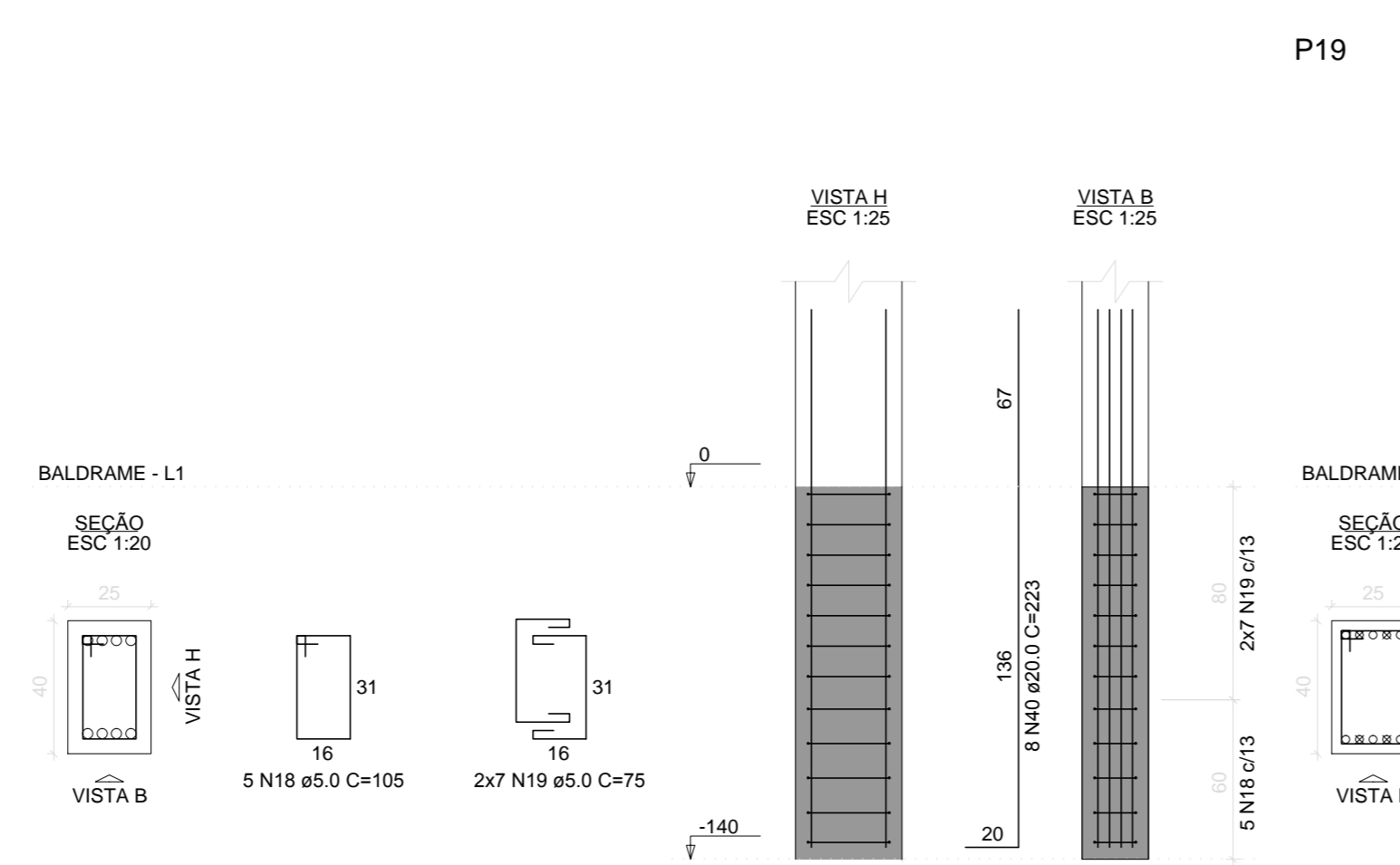
B13=B14=B15=B16=B17=B19
4xHCM30
PLANTA
ESC 1:25



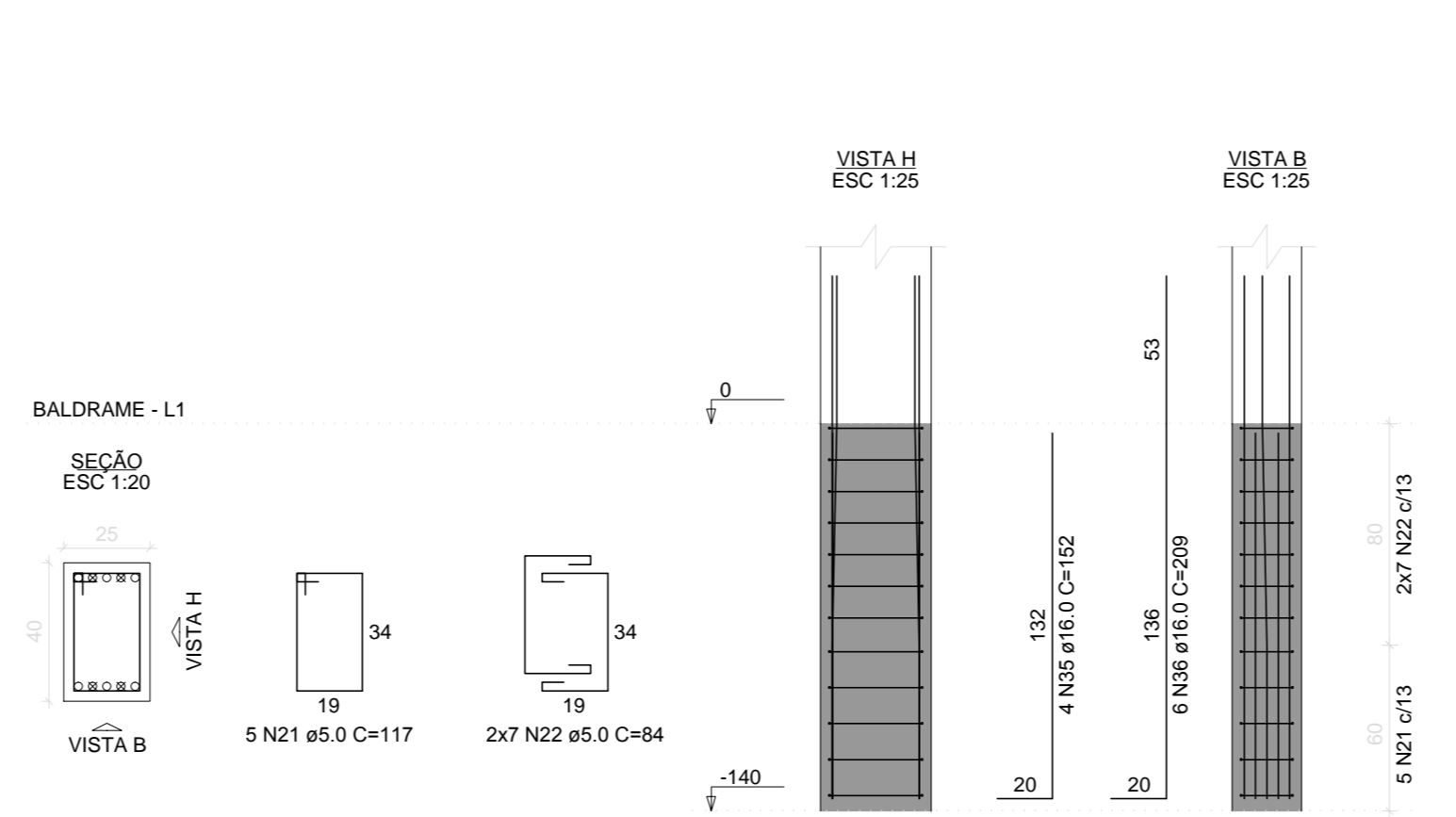
CORTE A-A = CORTE B-B
ESC 1:25



P13=P14=P15=P16=P17



P19



Notas:
01 NBR6118:2014 - Classe de Agressividade Ambiental = II (estrutura revestida).
02 NBR6118:2014 - Concreto com fck=30MPa - Água CA=50.
03 NBR6118:2014 - Cobrimentos fixados nas respectivas plantas de detalhes de armações.
Controle rigoroso das formas.
04 Unidades: diâmetro do aço em milímetros; espaçamento e comprimento em centímetros; níveis em metro.



OBRA: PRÉDIO MEDICINA - C. TEÓFILO OTONI		PRÓPRIETÁRIO: UFVJM - MG	
AUTOR: MAICON M. MORAIS-CREA/SC 129409-0	ESCALA: INDICADA	PRINCHA:	
RESP. TÉCNICO: Eng. Maicon M. Moraes -CREA/SC 129409-0	DESENHO: MAICON	07/41	
CONTEÚDO: Armação blocos e arranques.	Nº DESENHO: UPV-ENG-EST-PE-007	ÁREA:	1551,00 m ²